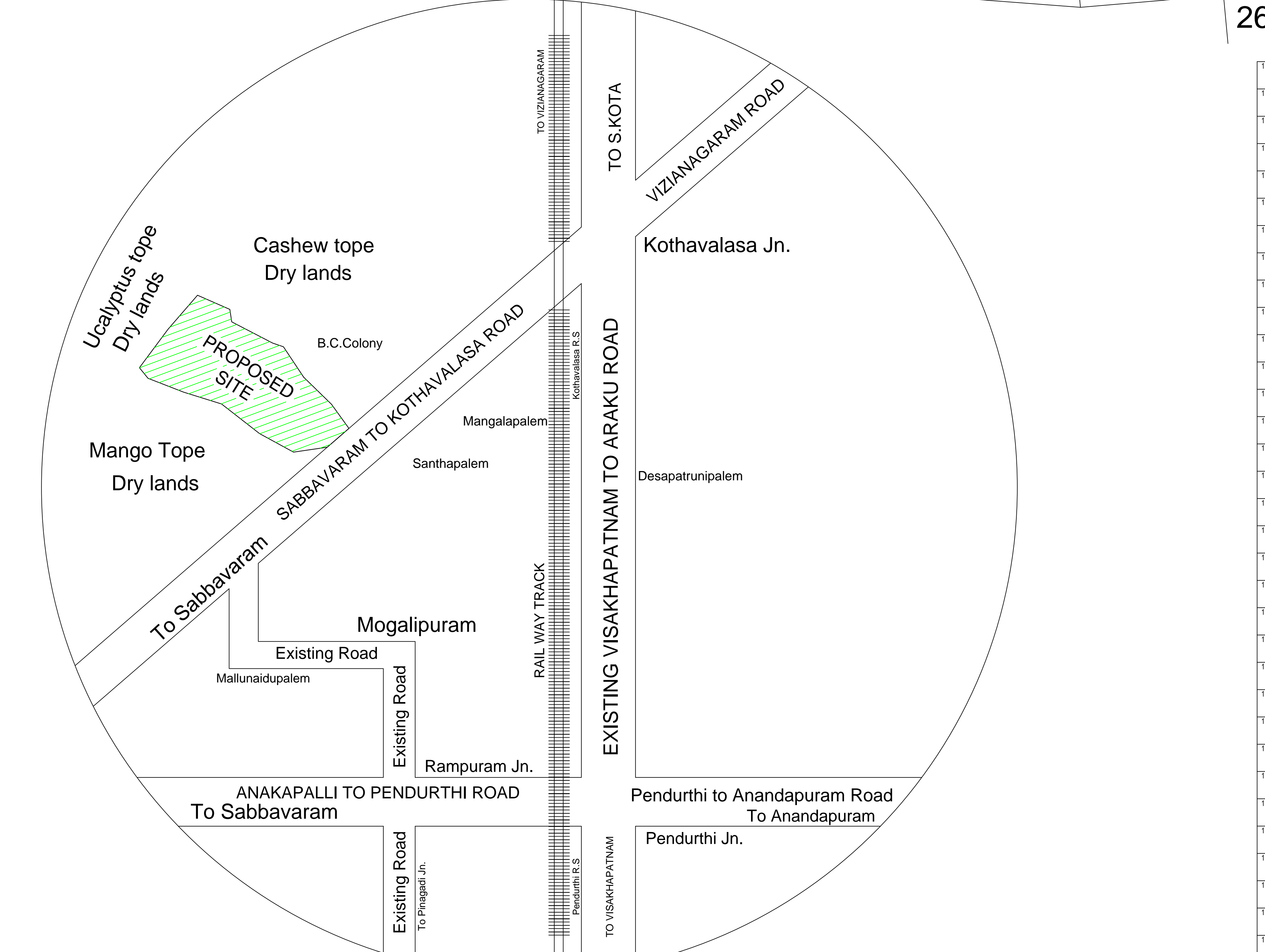
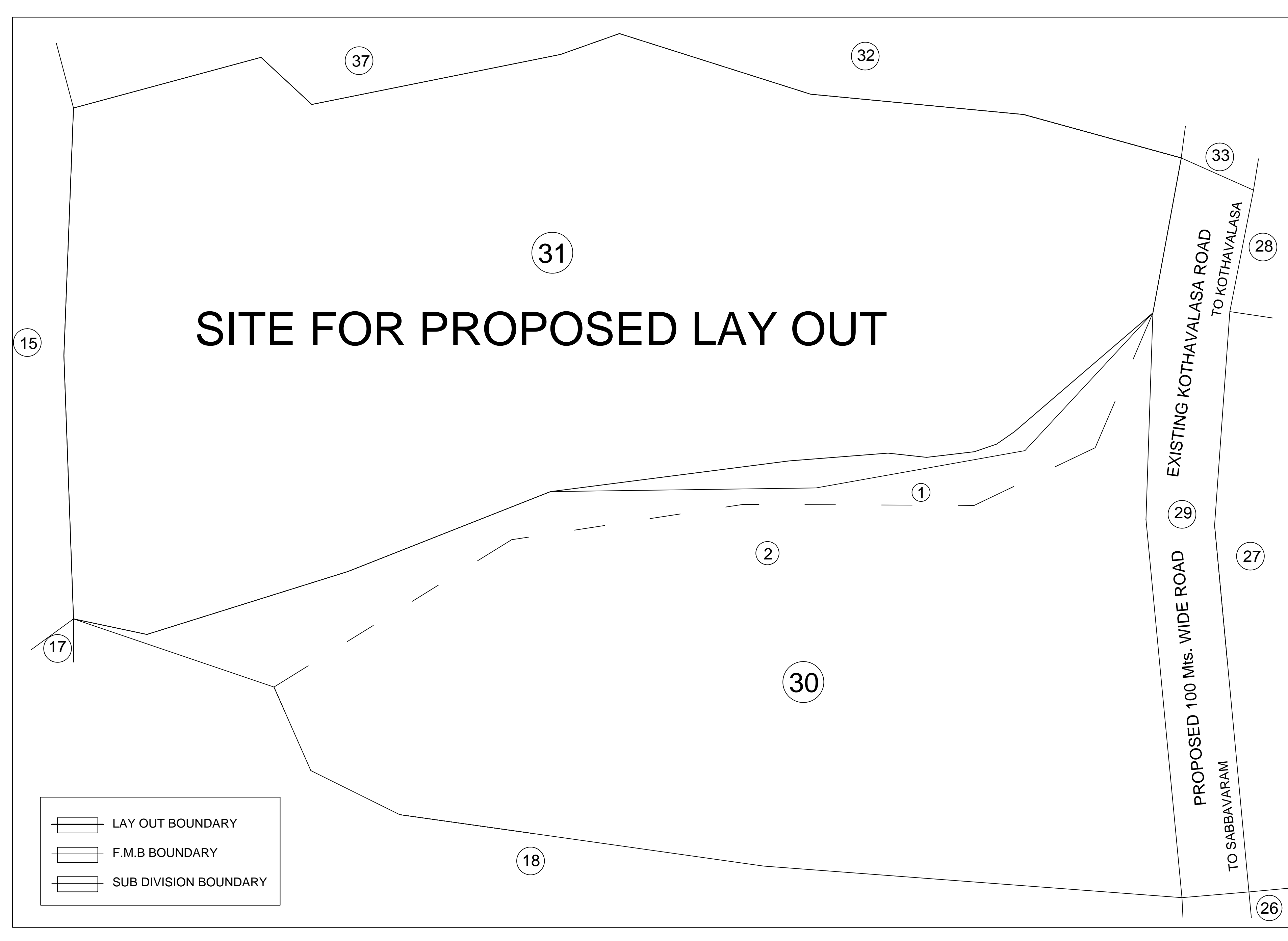


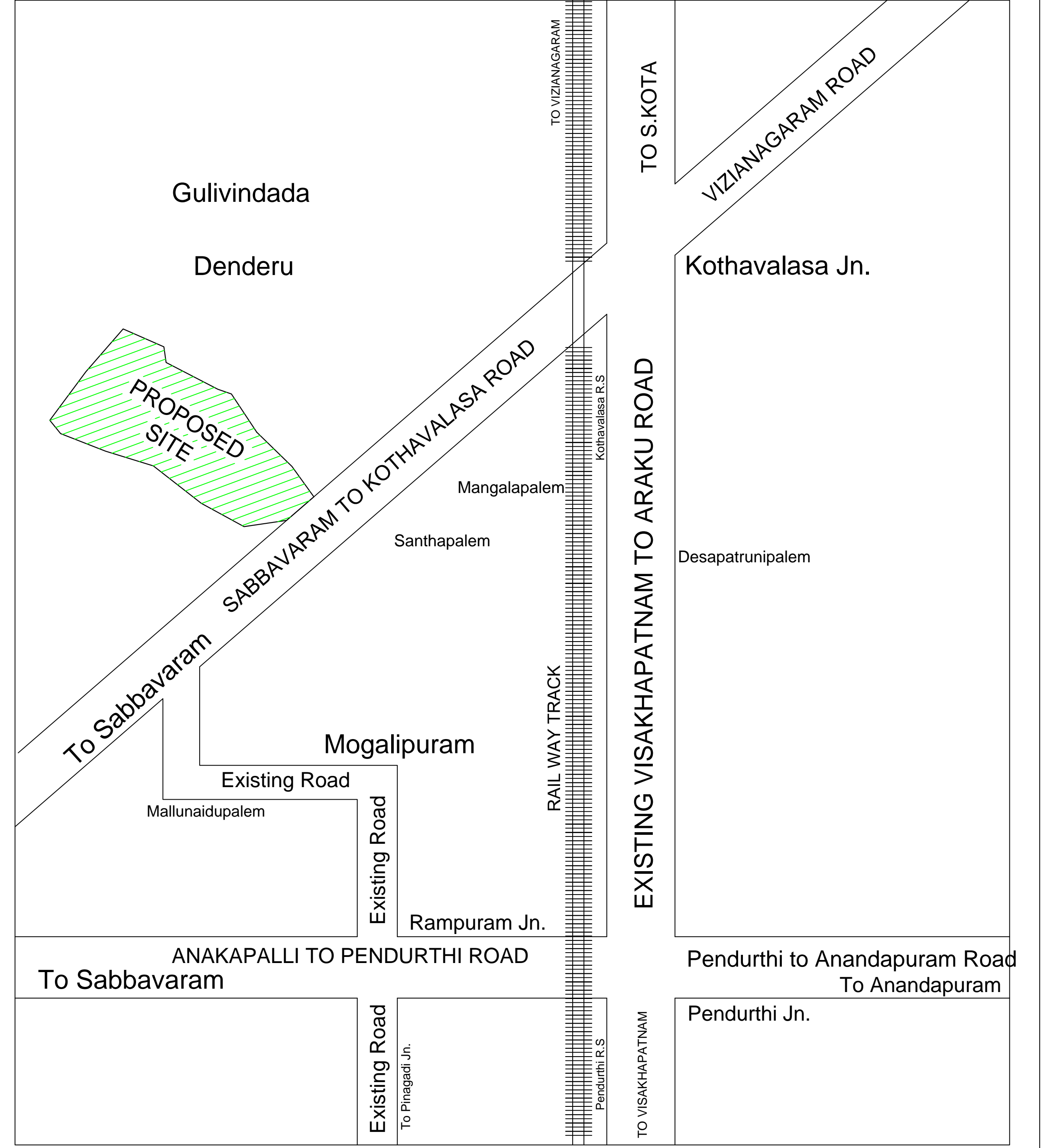
Land in Survey Nos. 37 & 32 of Santhapalem Village



Site Plan



Plot No.	Area (Sq. Yds)	Area (Sq. Mts)	Area (Ac)	Area (Cts)	Area (SqFt)	
101	100.00	92.17	0.00	9.14	18.25	9.14
102	100.00	92.17	0.00	9.14	18.25	9.14
103	100.00	92.17	0.00	9.14	18.25	9.14
104	100.00	92.17	0.00	9.14	18.25	9.14
105	100.00	92.17	0.00	9.14	18.25	9.14
106	100.00	92.17	0.00	9.14	18.25	9.14
107	100.00	92.17	0.00	9.14	18.25	9.14
108	100.00	92.17	0.00	9.14	18.25	9.14
109	100.00	92.17	0.00	9.14	18.25	9.14
110	100.00	92.17	0.00	9.14	18.25	9.14
111	100.00	92.17	0.00	9.14	18.25	9.14
112	100.00	92.17	0.00	9.14	18.25	9.14
113	100.00	92.17	0.00	9.14	18.25	9.14
114	100.00	92.17	0.00	9.14	18.25	9.14
115	100.00	92.17	0.00	9.14	18.25	9.14
116	100.00	92.17	0.00	9.14	18.25	9.14
117	100.00	92.17	0.00	9.14	18.25	9.14
118	100.00	92.17	0.00	9.14	18.25	9.14
119	100.00	92.17	0.00	9.14	18.25	9.14
120	100.00	92.17	0.00	9.14	18.25	9.14
121	100.00	92.17	0.00	9.14	18.25	9.14
122	100.00	92.17	0.00	9.14	18.25	9.14
123	100.00	92.17	0.00	9.14	18.25	9.14
124	100.00	92.17	0.00	9.14	18.25	9.14
125	100.00	92.17	0.00	9.14	18.25	9.14
126	100.00	92.17	0.00	9.14	18.25	9.14
127	100.00	92.17	0.00	9.14	18.25	9.14
128	100.00	92.17	0.00	9.14	18.25	9.14
129	100.00	92.17	0.00	9.14	18.25	9.14
130	100.00	92.17	0.00	9.14	18.25	9.14
131	100.00	92.17	0.00	9.14	18.25	9.14
132	100.00	92.17	0.00	9.14	18.25	9.14
133	100.00	92.17	0.00	9.14	18.25	9.14
134	100.00	92.17	0.00	9.14	18.25	9.14
135	100.00	92.17	0.00	9.14	18.25	9.14



Land Details

S.No	NAME OF VILLAGE	SURVEY No.	IN ACRES	IN SQ. YDS.	IN SQ.MTS.
1.	Santhapalem	31	11.27	54546.80	45609.69
TOTAL EXTENT			11.27	54546.80	45609.69

Mortgage Details

PLOTS MORTGAGED TO VUDA
PLOT Nos.- 122 to 135
No. of Plots = 14 Nos
EXTENT:- Ac 0.983 Cts/ 4758.00 SqYds (3978.43 SqMts)

Individual Plot Area	Plot No.	Area (Sq. Yds)	Area (Sq. Mts)	Area (Ac)	Area (Cts)	Area (SqFt)
INTERNAL ROAD	1	100.00	92.17	0.00	9.14	18.25
INTERNAL ROAD	2	100.00	92.17	0.00	9.14	18.25
INTERNAL ROAD	3	100.00	92.17	0.00	9.14	18.25
INTERNAL ROAD	4	100.00	92.17	0.00	9.14	18.25
INTERNAL ROAD	5	100.00	92.17	0.00	9.14	18.25
INTERNAL ROAD	6	100.00	92.17	0.00	9.14	18.25
INTERNAL ROAD	7	100.00	92.17	0.00	9.14	18.25
INTERNAL ROAD	8	100.00	92.17	0.00	9.14	18.25
INTERNAL ROAD	9	100.00	92.17	0.00	9.14	18.25
INTERNAL ROAD	10	100.00	92.17	0.00	9.14	18.25
INTERNAL ROAD	11	100.00	92.17	0.00	9.14	18.25
INTERNAL ROAD	12	100.00	92.17	0.00	9.14	18.25
INTERNAL ROAD	13	100.00	92.17	0.00	9.14	18.25
INTERNAL ROAD	14	100.00	92.17	0.00	9.14	18.25
INTERNAL ROAD	15	100.00	92.17	0.00	9.14	18.25
INTERNAL ROAD	16	100.00	92.17	0.00	9.14	18.25
INTERNAL ROAD	17	100.00	92.17	0.00	9.14	18.25
INTERNAL ROAD	18	100.00	92.17	0.00	9.14	18.25
INTERNAL ROAD	19	100.00	92.17	0.00	9.14	18.25
INTERNAL ROAD	20	100.00	92.17	0.00	9.14	18.25
INTERNAL ROAD	21	100.00	92.17	0.00	9.14	18.25
INTERNAL ROAD	22	100.00	92.17	0.00	9.14	18.25
INTERNAL ROAD	23	100.00	92.17	0.00	9.14	18.25
INTERNAL ROAD	24	100.00	92.17	0.00	9.14	18.25
INTERNAL ROAD	25	100.00	92.17	0.00	9.14	18.25
INTERNAL ROAD	26	100.00	92.17	0.00	9.14	18.25
INTERNAL ROAD	27	100.00	92.17	0.00	9.14	18.25
INTERNAL ROAD	28	100.00	92.17	0.00	9.14	18.25
INTERNAL ROAD	29	100.00	92.17	0.00	9.14	18.25
INTERNAL ROAD	30	100.00	92.17	0.00	9.14	18.25
INTERNAL ROAD	31	100.00	92.17	0.00	9.14	18.25
INTERNAL ROAD	32	100.00	92.17	0.00	9.14	18.25
INTERNAL ROAD	33	100.00	92.17	0.00	9.14	18.25
INTERNAL ROAD	34	100.00	92.17	0.00	9.14	18.25
INTERNAL ROAD	35	100.00	92.17	0.00	9.14	18.25
INTERNAL ROAD	36	100.00	92.17	0.00	9.14	18.25
INTERNAL ROAD	37	100.00	92.17	0.00	9.14	18.25
INTERNAL ROAD	38	100.00	92.17	0.00	9.14	18.25
INTERNAL ROAD	39	100.00	92.17	0.00	9.14	18.25
INTERNAL ROAD	40	100.00	92.17	0.00	9.14	18.25
INTERNAL ROAD	41	100.00	92.17	0.00	9.14	18.25
INTERNAL ROAD	42	100.00	92.17	0.00	9.14	18.25
INTERNAL ROAD	43	100.00	92.17	0.00	9.14	18.25
INTERNAL ROAD	44	100.00	92.17	0.00	9.14	18.25
INTERNAL ROAD	45	100.00	92.17	0.00	9.14	18.25
INTERNAL ROAD	46	100.00	92.17	0.00	9.14	18.25
INTERNAL ROAD	47	100.00	92.17	0.00	9.14	18.25
INTERNAL ROAD	48	100.00	92.17	0.00	9.14	18.25
INTERNAL ROAD	49	100.00	92.17	0.00	9.14	18.25
INTERNAL ROAD	50	100.00	92.17	0.00	9.14	18.25
INTERNAL ROAD	51	100.00	92.17	0.00	9.14	18.25
INTERNAL ROAD	52	100.00	92.17	0.00	9.14	18.25
INTERNAL ROAD	53	100.00	92.17	0.00	9.14	18.25
INTERNAL ROAD	54	100.00	92.17	0.00	9.14	18.25
INTERNAL ROAD	55	100.00	92.17	0.00	9.14	18.25
INTERNAL ROAD	56	100.00	92.17	0.00	9.14	18.25
INTERNAL ROAD	57	100.00	92.17	0.00	9.14	18.25
INTERNAL ROAD	58	100.00	92.17	0.00	9.14	18.25
INTERNAL ROAD	59	100.00	92.17	0.00	9.14	18.25
INTERNAL ROAD	60	100.00	92.17	0.00	9.14	18.25
INTERNAL ROAD	61	100.00	92.17	0.00	9.14	18.25
INTERNAL ROAD	62	100.00	92.17	0.00	9.14	18.25
INTERNAL ROAD	63	100.00	92.17	0.00	9.14	18.25
INTERNAL ROAD	64	100.00	92.17	0.00	9.14	18.25
INTERNAL ROAD	65	100.00	92.17	0.00	9.14	18.25
INTERNAL ROAD	66	100.00	92.17	0.00	9.14	18.25
INTERNAL ROAD	67	100.00	92.17	0.00	9.14	18.25
INTERNAL ROAD	68	100.00	92.17	0.00	9.14	18.25
INTERNAL ROAD	69	100.00	92.17	0.00	9.14	18.25
INTERNAL ROAD	70	100.00	92.17	0.00	9.14	18.25
INTERNAL ROAD	71	100.00	92.17	0.00	9.14	18.25
INTERNAL ROAD	72	100.00	92.17	0.00	9.14	18.25
INTERNAL ROAD	73	100.00	92.17	0.00	9.14	18.25
INTERNAL ROAD	74	100.00	92.17	0.00	9.14	18.25
INTERNAL ROAD	75	100.00	92.17	0.00	9.14	18.25
INTERNAL ROAD	76	100.00	92.17	0.00	9.14	18.25
INTERNAL ROAD	77	100.00	92.17	0.00	9.14	18.25
INTERNAL ROAD	78	100.00	92.17	0.00	9.14	18.25
INTERNAL ROAD	79	100.00	92.17	0.00	9.14	18.25
INTERNAL ROAD	80	100.00	92.17	0.00	9.14	18.25
INTERNAL ROAD	81	100.00	92.17	0.00	9.14	18.25
INTERNAL ROAD	82	100.00	92.17	0.00	9.14	18.25
INTERNAL ROAD	83	100.00	92.17	0.00	9.14	18.25
INTERNAL ROAD	84	100.00	92.17	0.00	9.14	18.25
INTERNAL ROAD	85	100.00	92.17	0.00	9.14	18.25
INTERNAL ROAD	86	100.00	92.17	0.00	9.14	18.25
INTERNAL ROAD	87	100.00	92.17	0.00	9.14	18.25
INTERNAL ROAD	88	100.00	92.17	0.00	9.14	18.25
INTERNAL ROAD	89	100.00	92.17	0.00	9.14	18.25
INTERNAL ROAD	90	100.00	92.17	0.00	9.14	18.25
INTERNAL ROAD	91	100.00	92.17	0.00	9.14	18.25
INTERNAL ROAD	92	100.00	92.17	0.00	9.14	18.25
INTERNAL ROAD	93	100.00	92.17	0.00	9.14	18.25
INTERNAL ROAD	94	100.00	92.17	0.00	9.14	18.25
INTERNAL ROAD	95	100.00	92.17	0.00	9.14	18.25
INTERNAL ROAD	96	100.00	92.17	0.00	9.14	18.25
INTERNAL ROAD	97	100.00	92.17	0.00	9.14	18.25
INTERNAL ROAD	98	100.00	92.17	0.00	9.14	18.25
INTERNAL ROAD	99	100.00	92.17	0.00	9.14	18.25
INTERNAL ROAD	100	100.00	92.17	0.00	9.14	18.25
INTERNAL ROAD	101	100.00	92.17	0.00	9.14	18.25
INTERNAL ROAD	102	100.00	92.17	0.00	9.14	18.25
INTERNAL ROAD	103	100.00	92.17	0.00	9.14	18.25
INTERNAL ROAD	104	100.00	92.17	0.00	9.14	18.25
INTERNAL ROAD	105	100.00	92.17	0.00	9.14	18.25
INTERNAL ROAD	106	100.00	92.17	0.00	9.14	18.25
INTERNAL ROAD	107	100.00	92.17	0.00	9.14	18.25
INTERNAL ROAD	108	100.00	92.17	0.00	9.14	18.25
INTERNAL ROAD	109	100.00	92.17	0.00	9.14	18.25
INTERNAL ROAD	110	100.00	92.17	0.00	9.14	18.25
INTERNAL ROAD	111	100.00	92.17	0.00	9.14	18.25
INTERNAL ROAD	112	100.00	92.17	0.00	9.14	18.25
INTERNAL ROAD	113	100.00	92.17	0.00	9.14	18.25
INTERNAL ROAD	114	100.00	92.17	0.00	9.14	18.25
INTERNAL ROAD	115	100.00	92.17	0.00	9.14	18.25
INTERNAL ROAD	116	100.00	92.17	0.00	9.14	18.25
INTERNAL ROAD	117	100.00	92.17	0.00	9.14	18.25
INTERNAL ROAD	118	100.00	92.17	0.00	9.14	18.25
INTERNAL ROAD	119	100.00	92.17	0.00	9.14	18.25
INTERNAL ROAD	120	100.00	92.17	0.00	9.14	18.25
INTERNAL ROAD	121	100.00	92.17	0.00	9.14	18.25
INTERNAL ROAD	122	100.00	92.17	0.		