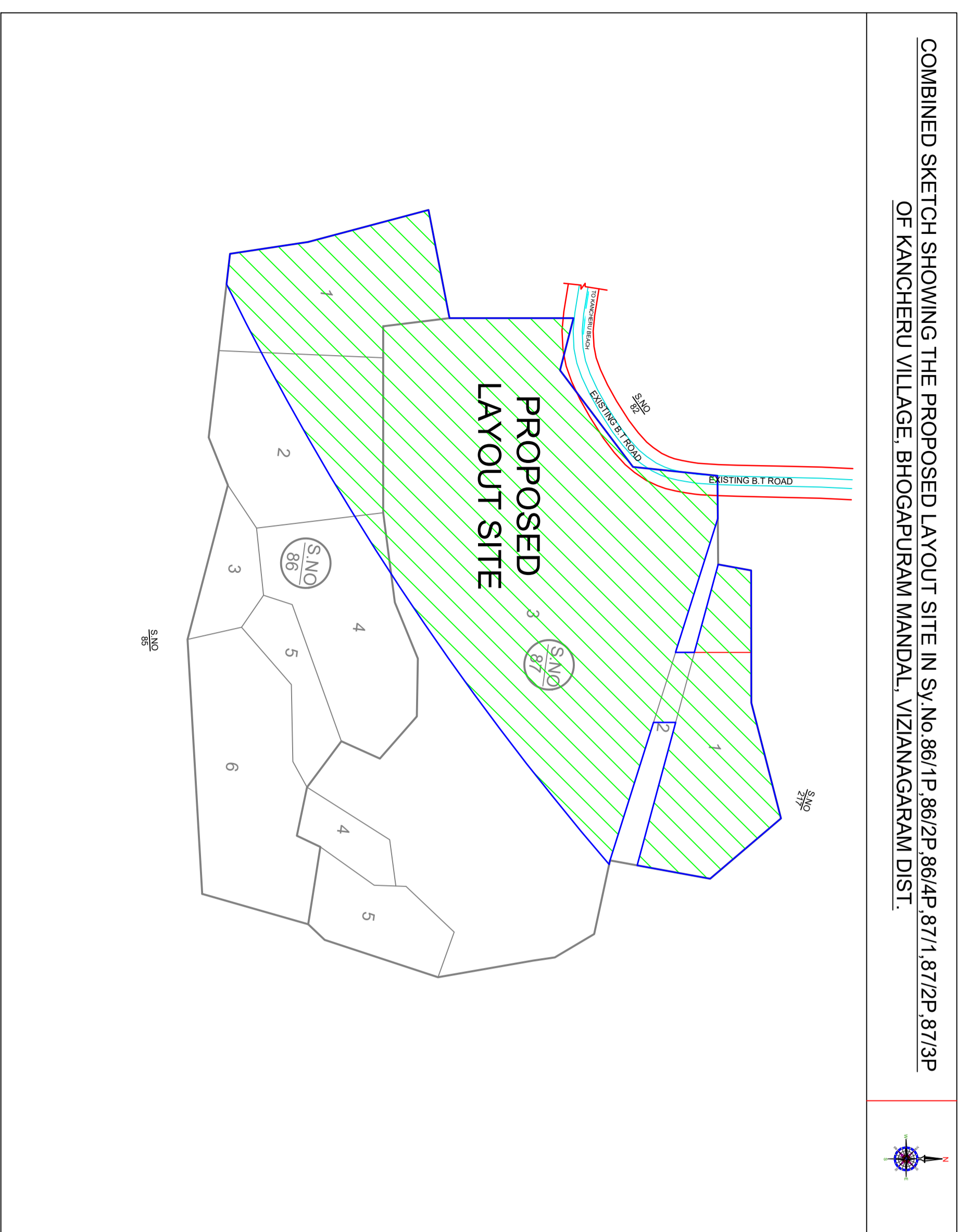
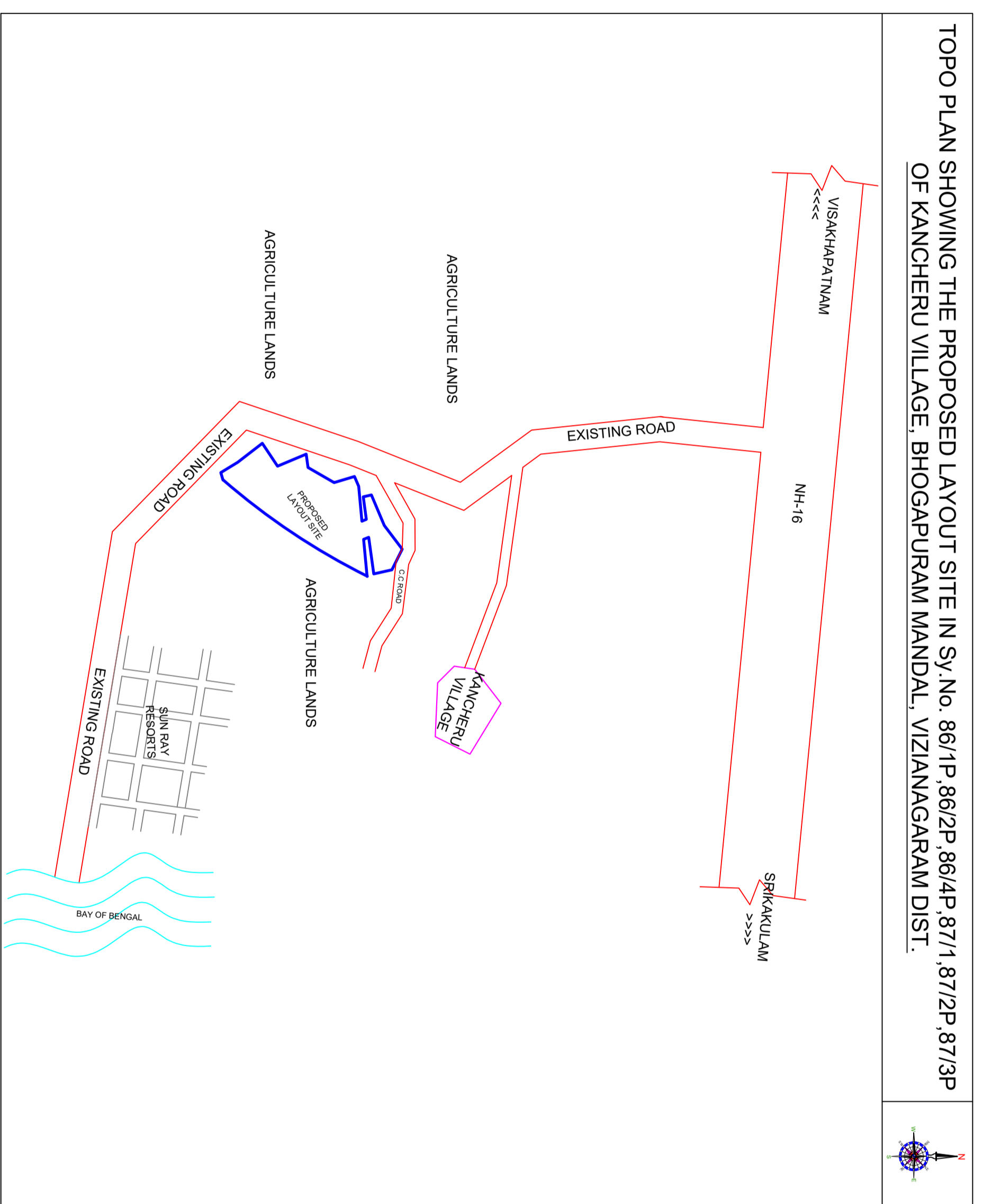




LAYOUT PLAN
(Scale - 1:800)



COMBINED SKETCH SHOWING THE PROPOSED LAYOUT SITE IN S.No.86/1P/86/2P/86/4P/87/1/87/2P/87/3P
OF KANCHERU VILLAGE, BHOGAPURAM MANDAL, VIZIANAGARAM DIST.



TOPO PLAN SHOWING THE PROPOSED LAYOUT SITE IN S.No. 86/1P/86/2P/86/4P/87/1/87/2P/87/3P
OF KANCHERU VILLAGE, BHOGAPURAM MANDAL, VIZIANAGARAM DIST.

S.No.	Sy.No.	Area (Ac.)	Area		Perimeter		Shape	Remarks
			Proposed	Actual	Proposed	Actual		
1	87-1	0.93	0.00	0.93	1.44	1.44	-	26.30
2	87-2	0.06	0.00	0.06	0.39	0.39	-	18.29
3	87-3	4.21	0.00	4.21	6.95	6.95	-	30.33
4	86-1	0.86	0.00	0.86	1.24	1.24	-	14.24
5	86-2	0.46	0.00	0.46	0.78	0.78	-	9.14
6	86-4	0.04	0.00	0.04	0.54	0.54	-	9.14
7			0.00	0.00	0.00	0.00	-	9.14
8			0.00	0.00	0.00	0.00	-	9.14
9			0.00	0.00	0.00	0.00	-	9.14
10			0.00	0.00	0.00	0.00	-	9.14
11			0.00	0.00	0.00	0.00	-	9.14
12			0.00	0.00	0.00	0.00	-	9.14
13			0.00	0.00	0.00	0.00	-	9.14
14			0.00	0.00	0.00	0.00	-	22.40
15			0.00	0.00	0.00	0.00	-	9.14
16			0.00	0.00	0.00	0.00	-	9.14
17			0.00	0.00	0.00	0.00	-	9.14
18			0.00	0.00	0.00	0.00	-	9.14
19			0.00	0.00	0.00	0.00	-	9.14
20			0.00	0.00	0.00	0.00	-	9.14
21			0.00	0.00	0.00	0.00	-	9.14
22			0.00	0.00	0.00	0.00	-	16.01
23			0.00	0.00	0.00	0.00	-	14.64
24			0.00	0.00	0.00	0.00	-	12.19
25			0.00	0.00	0.00	0.00	-	9.14
26			0.00	0.00	0.00	0.00	-	9.14
27			0.00	0.00	0.00	0.00	-	9.14
28			0.00	0.00	0.00	0.00	-	9.14
29			0.00	0.00	0.00	0.00	-	9.14
30			0.00	0.00	0.00	0.00	-	9.14
31			0.00	0.00	0.00	0.00	-	9.14
32			0.00	0.00	0.00	0.00	-	9.14
33			0.00	0.00	0.00	0.00	-	9.14
34			0.00	0.00	0.00	0.00	-	9.14
35			0.00	0.00	0.00	0.00	-	14.67
36			0.00	0.00	0.00	0.00	-	9.14
37			0.00	0.00	0.00	0.00	-	9.14
38			0.00	0.00	0.00	0.00	-	9.14
39			0.00	0.00	0.00	0.00	-	9.14
40			0.00	0.00	0.00	0.00	-	9.14
41			0.00	0.00	0.00	0.00	-	9.14
42			0.00	0.00	0.00	0.00	-	9.14
43			0.00	0.00	0.00	0.00	-	9.14
44			0.00	0.00	0.00	0.00	-	15.82
45			0.00	0.00	0.00	0.00	-	15.80
46			0.00	0.00	0.00	0.00	-	9.14
47			0.00	0.00	0.00	0.00	-	12.19
48			0.00	0.00	0.00	0.00	-	9.14
49			0.00	0.00	0.00	0.00	-	9.14
50			0.00	0.00	0.00	0.00	-	9.14
51			0.00	0.00	0.00	0.00	-	9.14
52			0.00	0.00	0.00	0.00	-	9.14
53			0.00	0.00	0.00	0.00	-	12.27
54			0.00	0.00	0.00	0.00	-	16.61
55			0.00	0.00	0.00	0.00	-	9.14
56			0.00	0.00	0.00	0.00	-	9.14
57			0.00	0.00	0.00	0.00	-	9.14
58			0.00	0.00	0.00	0.00	-	9.14
59			0.00	0.00	0.00	0.00	-	9.14
60			0.00	0.00	0.00	0.00	-	9.14
61			0.00	0.00	0.00	0.00	-	9.14
62			0.00	0.00	0.00	0.00	-	16.61
63			0.00	0.00	0.00	0.00	-	10.85
64			0.00	0.00	0.00	0.00	-	9.14
65			0.00	0.00	0.00	0.00	-	9.14
66			0.00	0.00	0.00	0.00	-	9.14
67			0.00	0.00	0.00	0.00	-	9.14
70			0.00	0.00	0.00	0.00	-	22.27

S.No.	Sy.No.	Extent (Ac.)
1.	87-1	0.93
2.	87-2	0.06
3.	87-3	4.21
4.	86-1	0.86
5.	86-2	0.46
6.	86-4	0.04
Total		6.56

Area Statement	Area (Ac.)	
1.	87-1	0.93
2.	87-2	0.06
3.	87-3	4.21
4.	86-1	0.86
5.	86-2	0.46
6.	86-4	0.04
Total		6.56

Land use analysis/area distribution (Table 2a)

Area covered under	Proposed area in ha	Percentage (%)
Total Area	656.00	100.00
Proposed Area	656.00	100.00
Reservable Area	0.00	0.00
Unutilized Area	0.00	0.00
Other Area	0.00	0.00
Total	656.00	100.00

Land Area to Mortgage Details

Sl. No.	Land Area to Mortgage	Area (Ac.)
1	Land Area to Mortgage	227.21
2	Land Area to Mortgage	105.35
3	Land Area to Mortgage	209.91
Total		542.47

Mortgage Area Details

Sl. No.	Mortgage Area	Area (Ac.)
1	Mortgage Area	227.21
2	Mortgage Area	105.35
3	Mortgage Area	209.91
Total		542.47

General Conditions

- The area is proposed for mortgage/loan to be sanctioned.
- The area is proposed for mortgage/loan to be sanctioned.