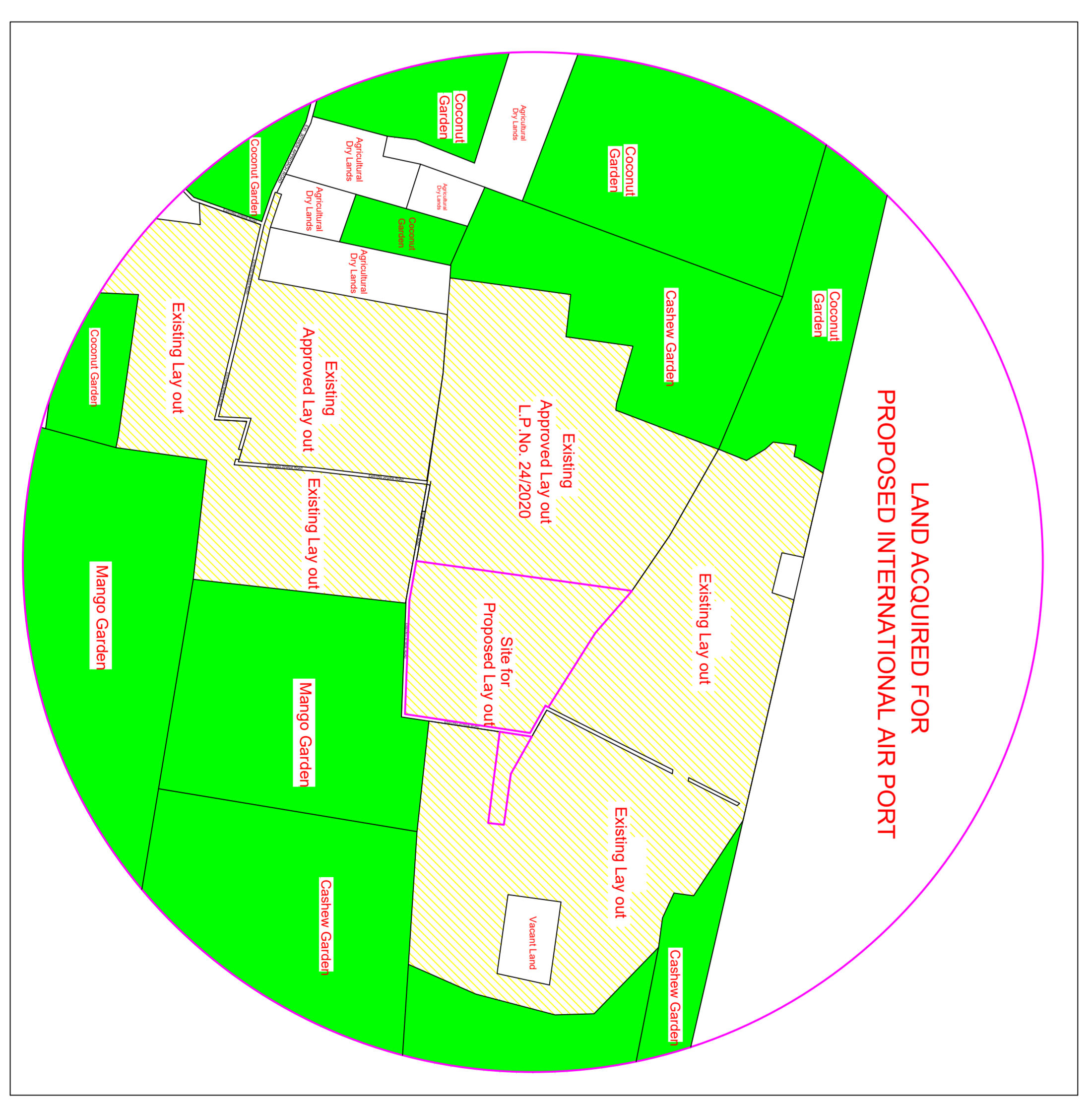
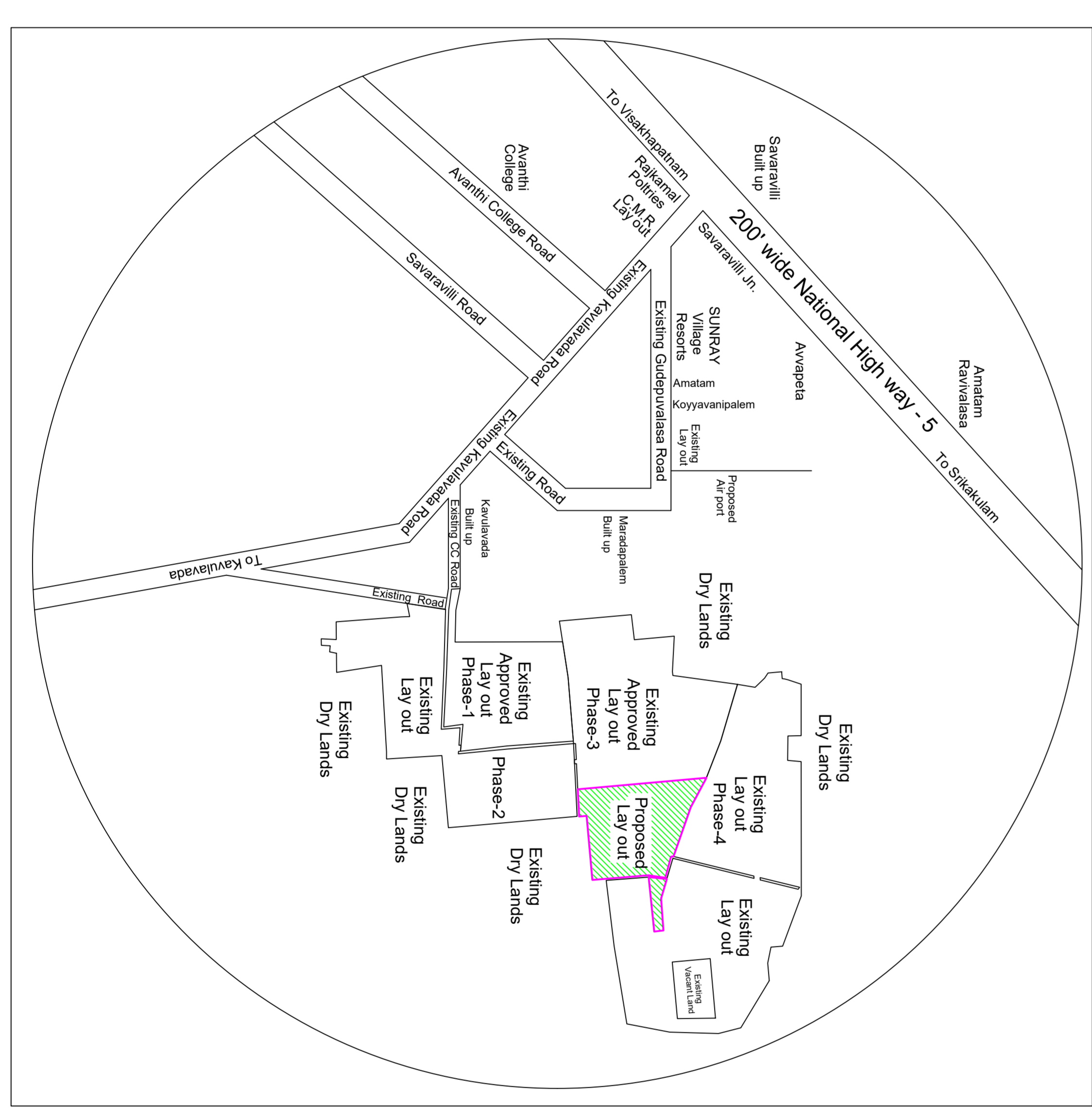
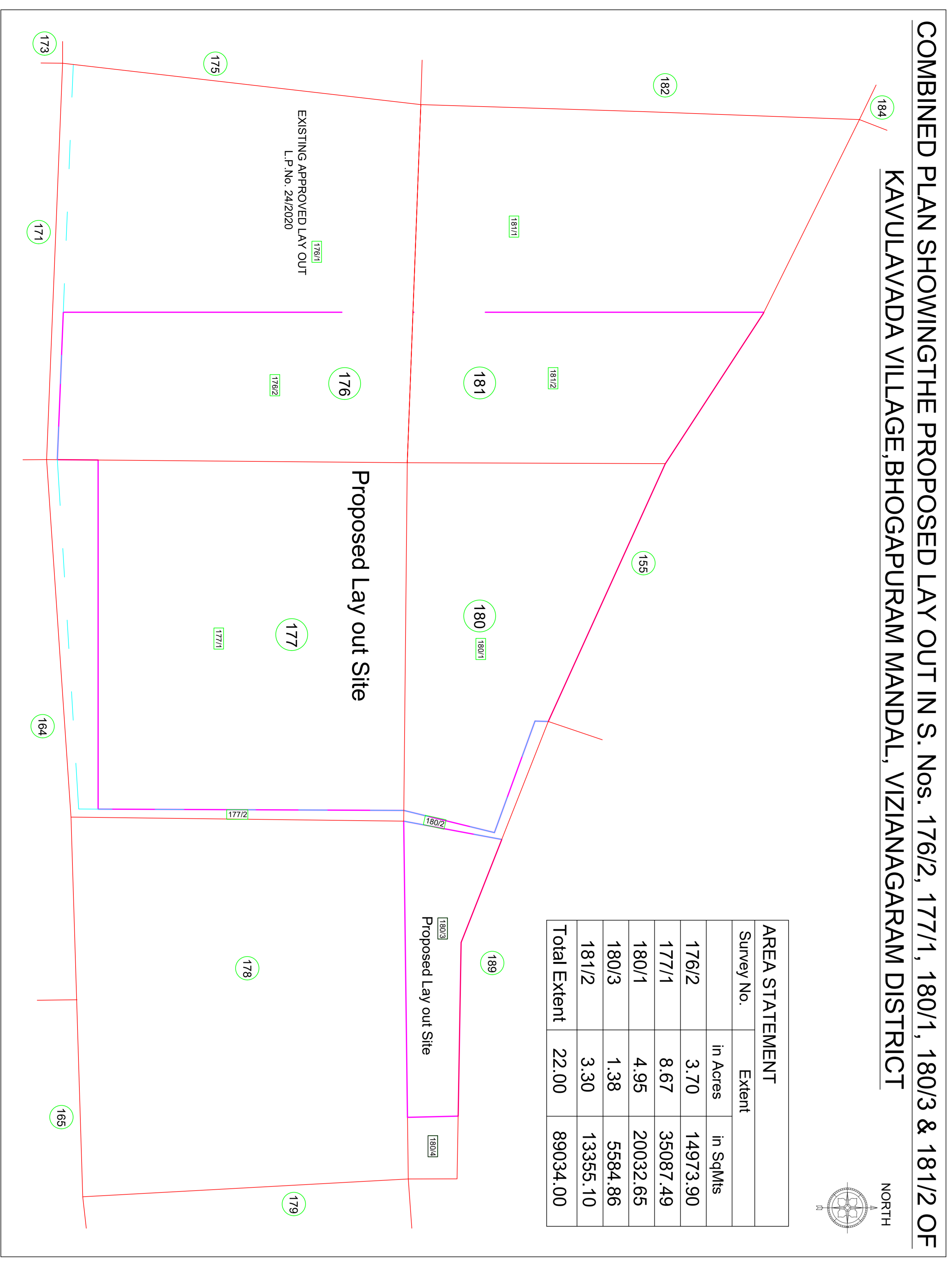


Site Plan
 (Scale - 1:800)

AREA STATEMENT

| Survey No. | Extent | In Acres | In SqMts |
|---------------------|--------------|-----------------|----------|
| 176/2 | 3.70 | 14973.90 | |
| 177/1 | 8.67 | 35087.49 | |
| 180/3 | 4.95 | 20032.65 | |
| 180/3 | 1.38 | 5584.86 | |
| 181/2 | 3.30 | 13355.10 | |
| Total Extent | 22.00 | 89034.00 | |



PROPERTY LIST

| Sl. No. | Survey No. | Area (Acres) | Area (SqMts) | Remarks |
|---------|------------|--------------|--------------|---------|
| 1 | 176/2 | 3.70 | 14973.90 | ... |
| 2 | 177/1 | 8.67 | 35087.49 | ... |
| 3 | 180/3 | 4.95 | 20032.65 | ... |
| 4 | 180/3 | 1.38 | 5584.86 | ... |
| 5 | 181/2 | 3.30 | 13355.10 | ... |
| 6 | 176/2 | 3.70 | 14973.90 | ... |
| 7 | 177/1 | 8.67 | 35087.49 | ... |
| 8 | 180/3 | 4.95 | 20032.65 | ... |
| 9 | 180/3 | 1.38 | 5584.86 | ... |
| 10 | 181/2 | 3.30 | 13355.10 | ... |
| 11 | 176/2 | 3.70 | 14973.90 | ... |
| 12 | 177/1 | 8.67 | 35087.49 | ... |
| 13 | 180/3 | 4.95 | 20032.65 | ... |
| 14 | 180/3 | 1.38 | 5584.86 | ... |
| 15 | 181/2 | 3.30 | 13355.10 | ... |
| 16 | 176/2 | 3.70 | 14973.90 | ... |
| 17 | 177/1 | 8.67 | 35087.49 | ... |
| 18 | 180/3 | 4.95 | 20032.65 | ... |
| 19 | 180/3 | 1.38 | 5584.86 | ... |
| 20 | 181/2 | 3.30 | 13355.10 | ... |
| 21 | 176/2 | 3.70 | 14973.90 | ... |
| 22 | 177/1 | 8.67 | 35087.49 | ... |
| 23 | 180/3 | 4.95 | 20032.65 | ... |
| 24 | 180/3 | 1.38 | 5584.86 | ... |
| 25 | 181/2 | 3.30 | 13355.10 | ... |
| 26 | 176/2 | 3.70 | 14973.90 | ... |
| 27 | 177/1 | 8.67 | 35087.49 | ... |
| 28 | 180/3 | 4.95 | 20032.65 | ... |
| 29 | 180/3 | 1.38 | 5584.86 | ... |
| 30 | 181/2 | 3.30 | 13355.10 | ... |
| 31 | 176/2 | 3.70 | 14973.90 | ... |
| 32 | 177/1 | 8.67 | 35087.49 | ... |
| 33 | 180/3 | 4.95 | 20032.65 | ... |
| 34 | 180/3 | 1.38 | 5584.86 | ... |
| 35 | 181/2 | 3.30 | 13355.10 | ... |
| 36 | 176/2 | 3.70 | 14973.90 | ... |
| 37 | 177/1 | 8.67 | 35087.49 | ... |
| 38 | 180/3 | 4.95 | 20032.65 | ... |
| 39 | 180/3 | 1.38 | 5584.86 | ... |
| 40 | 181/2 | 3.30 | 13355.10 | ... |
| 41 | 176/2 | 3.70 | 14973.90 | ... |
| 42 | 177/1 | 8.67 | 35087.49 | ... |
| 43 | 180/3 | 4.95 | 20032.65 | ... |
| 44 | 180/3 | 1.38 | 5584.86 | ... |
| 45 | 181/2 | 3.30 | 13355.10 | ... |
| 46 | 176/2 | 3.70 | 14973.90 | ... |
| 47 | 177/1 | 8.67 | 35087.49 | ... |
| 48 | 180/3 | 4.95 | 20032.65 | ... |
| 49 | 180/3 | 1.38 | 5584.86 | ... |
| 50 | 181/2 | 3.30 | 13355.10 | ... |
| 51 | 176/2 | 3.70 | 14973.90 | ... |
| 52 | 177/1 | 8.67 | 35087.49 | ... |
| 53 | 180/3 | 4.95 | 20032.65 | ... |
| 54 | 180/3 | 1.38 | 5584.86 | ... |
| 55 | 181/2 | 3.30 | 13355.10 | ... |
| 56 | 176/2 | 3.70 | 14973.90 | ... |
| 57 | 177/1 | 8.67 | 35087.49 | ... |
| 58 | 180/3 | 4.95 | 20032.65 | ... |
| 59 | 180/3 | 1.38 | 5584.86 | ... |
| 60 | 181/2 | 3.30 | 13355.10 | ... |
| 61 | 176/2 | 3.70 | 14973.90 | ... |
| 62 | 177/1 | 8.67 | 35087.49 | ... |
| 63 | 180/3 | 4.95 | 20032.65 | ... |
| 64 | 180/3 | 1.38 | 5584.86 | ... |
| 65 | 181/2 | 3.30 | 13355.10 | ... |
| 66 | 176/2 | 3.70 | 14973.90 | ... |
| 67 | 177/1 | 8.67 | 35087.49 | ... |
| 68 | 180/3 | 4.95 | 20032.65 | ... |
| 69 | 180/3 | 1.38 | 5584.86 | ... |
| 70 | 181/2 | 3.30 | 13355.10 | ... |
| 71 | 176/2 | 3.70 | 14973.90 | ... |
| 72 | 177/1 | 8.67 | 35087.49 | ... |
| 73 | 180/3 | 4.95 | 20032.65 | ... |
| 74 | 180/3 | 1.38 | 5584.86 | ... |
| 75 | 181/2 | 3.30 | 13355.10 | ... |
| 76 | 176/2 | 3.70 | 14973.90 | ... |
| 77 | 177/1 | 8.67 | 35087.49 | ... |
| 78 | 180/3 | 4.95 | 20032.65 | ... |
| 79 | 180/3 | 1.38 | 5584.86 | ... |
| 80 | 181/2 | 3.30 | 13355.10 | ... |
| 81 | 176/2 | 3.70 | 14973.90 | ... |
| 82 | 177/1 | 8.67 | 35087.49 | ... |
| 83 | 180/3 | 4.95 | 20032.65 | ... |

Legend

- Proposed Lay out Site
- Existing Approved Lay out L.P. No. 24/2020
- Public Open Space - 1
- Public Open Space - 2
- Public Open Space - 3
- Amenity - 29
- Amenity - 30
- Amenity - 31
- Amenity - 32
- Amenity - 33
- Amenity - 34
- Amenity - 35
- Amenity - 36
- Amenity - 37
- Amenity - 38
- Amenity - 39
- Amenity - 40
- Amenity - 41
- Amenity - 42
- Amenity - 43
- Amenity - 44
- Amenity - 45
- Amenity - 46
- Amenity - 47
- Amenity - 48
- Amenity - 49
- Amenity - 50
- Amenity - 51
- Amenity - 52
- Amenity - 53
- Amenity - 54
- Amenity - 55
- Amenity - 56
- Amenity - 57
- Amenity - 58
- Amenity - 59
- Amenity - 60
- Amenity - 61
- Amenity - 62
- Amenity - 63
- Amenity - 64
- Amenity - 65
- Amenity - 66
- Amenity - 67
- Amenity - 68
- Amenity - 69
- Amenity - 70
- Amenity - 71
- Amenity - 72
- Amenity - 73
- Amenity - 74
- Amenity - 75
- Amenity - 76
- Amenity - 77
- Amenity - 78
- Amenity - 79
- Amenity - 80
- Amenity - 81
- Amenity - 82
- Amenity - 83

Scale

North Arrow

Project Information

Prepared by

Checked by

Approved by

Date