

DATLA HOMES EXISTING APPROVED LAY OUT VIDE VUDA L.P.No. 24/2009

EXI. 40' ROAD

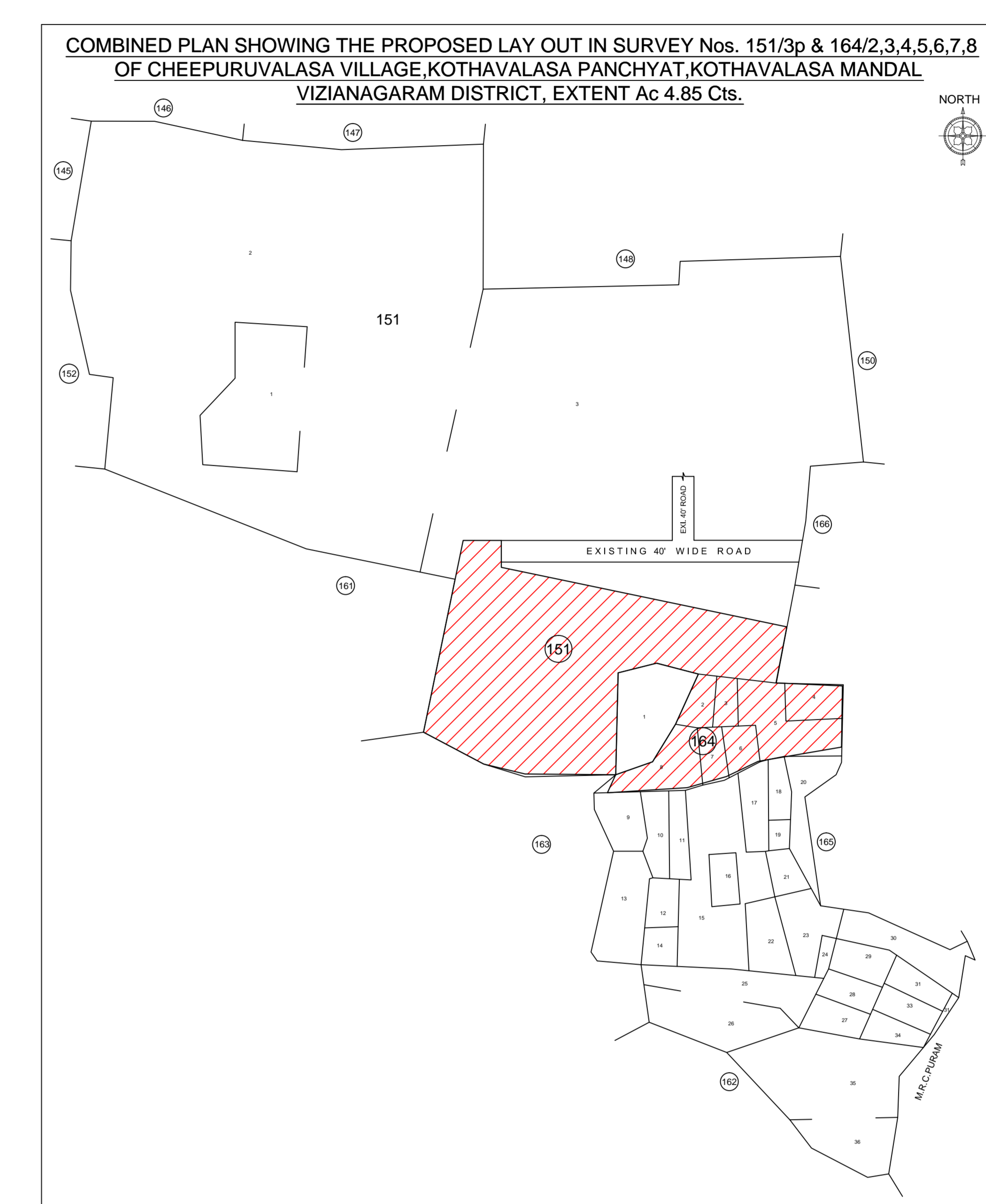
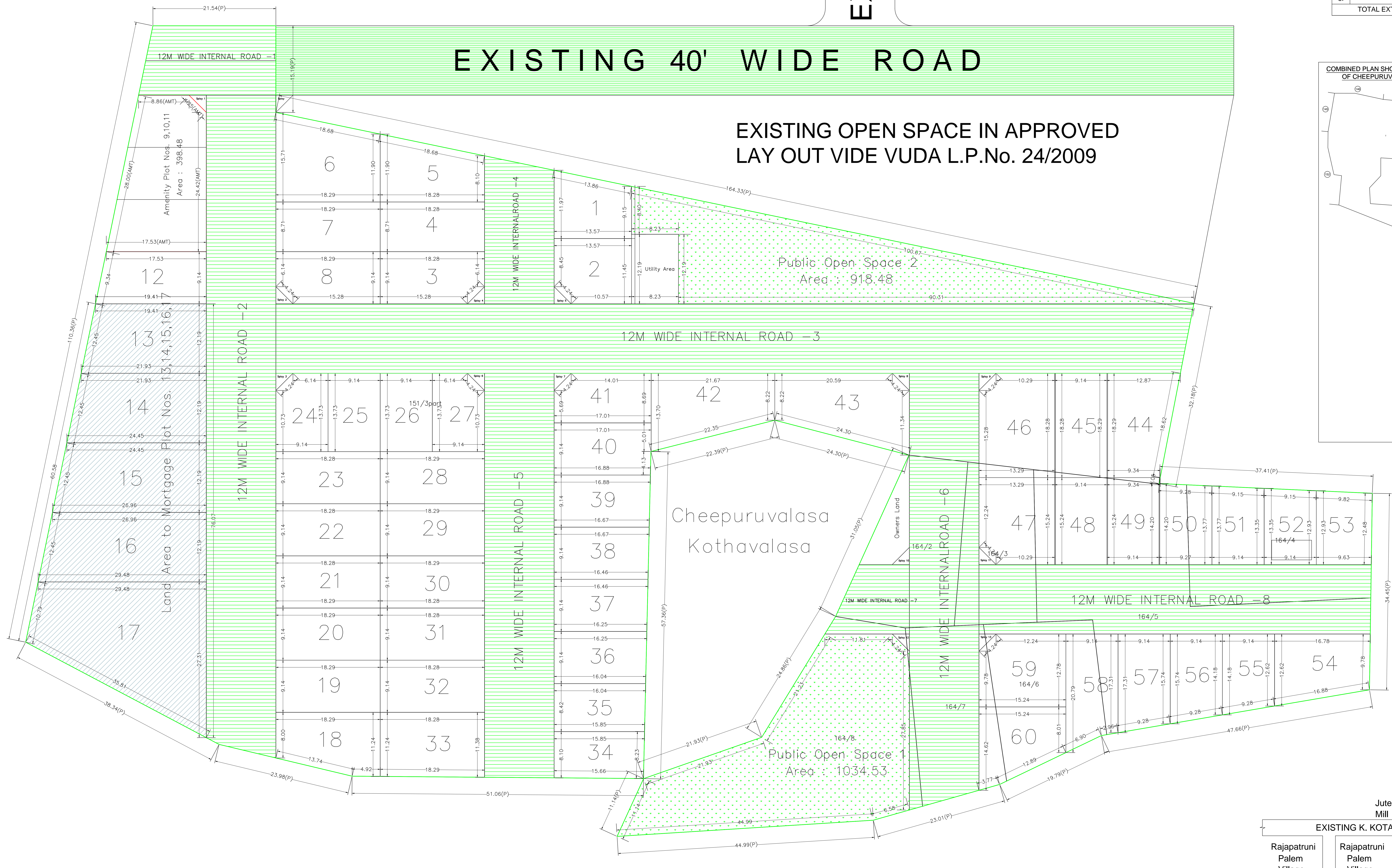
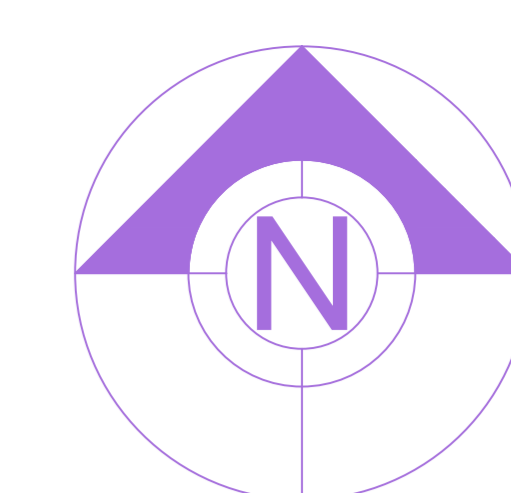
DATLA HOMES

REFERENCE:

- F.M.B BOUNDARY
- SUB DIVISION BOUNDARY
- PROPOSED LAY OUT BOUNDARY

PROPOSED LAND DETAILS

S.No.	NAME OF VILLAGE	SURVEY No.	EXTENT IN ACRES		
			RECORDED	REGISTERED	PROPOSED
1.	Cheepuruvalasa	151/3p	13.25	4.0635	3.69
2.		164/2	0.10	0.10	0.10
3.		164/3	0.10	0.10	0.10
4.		164/4	0.16	0.16	0.16
5.		164/5	0.40	0.40	0.40
6.		164/6	0.12	0.12	0.12
7.		164/7	0.10	0.10	0.10
8.		164/8	0.28	0.28	0.28
TOTAL EXTENT			14.51	5.3235	4.85



Color Index

Color	Meaning
Green	Proposed Construction
Yellow	Existing Construction
Red	Existing Area
Blue	Water Body

Land Use Analysis/Use Distribution (Table 2)

Area covered in	Proposed Area in sq. ft.	Existing Area in sq. ft.	Percentage
Proposed Area	151718	155844	50.33
Existing Area	8117	8117	2.61
Water Body	87947	87947	28.06
Area not analyzed	36848	36848	11.99
Other	18531	18531	5.99
Total	295221	295221	100.00

Land Area to Mortgage Details

Name	Int. Part Area	Ext. Part Area
Land Area to Mortgage Plot No. 151/3p, 164/2, 3, 4, 5, 6, 7, 8	12	251.99
	14	295.88
	18	347.89
	18	388.88
	18	1780.25

Individual Plot Area

Plot No.	Area	Prop. Part	Ext. Part	Int. Part	Ext. Part		
1	INTERNAL	100.00	14.27	8.80	11.87	15.07	11.07
2	INTERNAL	100.00	19.00	8.80	10.07	11.45	15.07
3	INTERNAL	100.00	10.07	8.80	10.20	9.14	15.28
4	INTERNAL	100.00	19.24	8.80	8.71	10.20	8.71
5	INTERNAL	100.00	10.20	8.80	8.10	10.20	8.10
6	INTERNAL	100.00	20.46	8.80	10.71	10.20	15.71
7	INTERNAL	100.00	19.24	8.80	8.71	10.20	8.71
8	INTERNAL	100.00	10.07	8.80	10.20	9.14	15.28
9	INTERNAL	100.00	20.46	8.80	10.71	10.20	15.71
10	INTERNAL	100.00	10.07	8.80	10.20	9.14	15.28
11	INTERNAL	100.00	19.24	8.80	10.20	10.20	15.20
12	INTERNAL	100.00	10.07	8.80	10.20	9.14	15.28
13	INTERNAL	100.00	20.46	8.80	10.71	10.20	15.71
14	INTERNAL	100.00	10.07	8.80	10.20	9.14	15.28
15	INTERNAL	100.00	19.24	8.80	10.20	10.20	15.20
16	INTERNAL	100.00	10.07	8.80	10.20	9.14	15.28
17	INTERNAL	100.00	19.24	8.80	10.20	10.20	15.20
18	INTERNAL	100.00	10.07	8.80	10.20	9.14	15.28
19	INTERNAL	100.00	19.24	8.80	10.20	10.20	15.20
20	INTERNAL	100.00	10.07	8.80	10.20	9.14	15.28
21	INTERNAL	100.00	19.24	8.80	10.20	10.20	15.20
22	INTERNAL	100.00	10.07	8.80	10.20	9.14	15.28
23	INTERNAL	100.00	19.24	8.80	10.20	10.20	15.20
24	INTERNAL	100.00	10.07	8.80	10.20	9.14	15.28
25	INTERNAL	100.00	19.24	8.80	10.20	10.20	15.20
26	INTERNAL	100.00	10.07	8.80	10.20	9.14	15.28
27	INTERNAL	100.00	19.24	8.80	10.20	10.20	15.20
28	INTERNAL	100.00	10.07	8.80	10.20	9.14	15.28
29	INTERNAL	100.00	19.24	8.80	10.20	10.20	15.20
30	INTERNAL	100.00	10.07	8.80	10.20	9.14	15.28
31	INTERNAL	100.00	19.24	8.80	10.20	10.20	15.20
32	INTERNAL	100.00	10.07	8.80	10.20	9.14	15.28
33	INTERNAL	100.00	19.24	8.80	10.20	10.20	15.20
34	INTERNAL	100.00	10.07	8.80	10.20	9.14	15.28
35	INTERNAL	100.00	19.24	8.80	10.20	10.20	15.20
36	INTERNAL	100.00	10.07	8.80	10.20	9.14	15.28
37	INTERNAL	100.00	19.24	8.80	10.20	10.20	15.20
38	INTERNAL	100.00	10.07	8.80	10.20	9.14	15.28
39	INTERNAL	100.00	19.24	8.80	10.20	10.20	15.20
40	INTERNAL	100.00	10.07	8.80	10.20	9.14	15.28
41	INTERNAL	100.00	19.24	8.80	10.20	10.20	15.20
42	INTERNAL	100.00	10.07	8.80	10.20	9.14	15.28
43	INTERNAL	100.00	19.24	8.80	10.20	10.20	15.20
44	INTERNAL	100.00	10.07	8.80	10.20	9.14	15.28
45	INTERNAL	100.00	19.24	8.80	10.20	10.20	15.20
46	INTERNAL	100.00	10.07	8.80	10.20	9.14	15.28
47	INTERNAL	100.00	19.24	8.80	10.20	10.20	15.20
48	INTERNAL	100.00	10.07	8.80	10.20	9.14	15.28
49	INTERNAL	100.00	19.24	8.80	10.20	10.20	15.20
50	INTERNAL	100.00	10.07	8.80	10.20	9.14	15.28
51	INTERNAL	100.00	19.24	8.80	10.20	10.20	15.20
52	INTERNAL	100.00	10.07	8.80	10.20	9.14	15.28
53	INTERNAL	100.00	19.24	8.80	10.20	10.20	15.20
54	INTERNAL	100.00	10.07	8.80	10.20	9.14	15.28
55	INTERNAL	100.00	19.24	8.80	10.20	10.20	15.20
56	INTERNAL	100.00	10.07	8.80	10.20	9.14	15.28
57	INTERNAL	100.00	19.24	8.80	10.20	10.20	15.20
58	INTERNAL	100.00	10.07	8.80	10.20	9.14	15.28
59	INTERNAL	100.00	19.24	8.80	10.20	10.20	15.20
60	INTERNAL	100.00	10.07	8.80	10.20	9.14	15.28

Site Plan

