

PROPOSED LAYOUT FOR MUNICIPAL EMPLOYEES
H.B. SOCIETY INS NO: 35 K.N WARD
VIZIANAGARAM

LAND USE ANALYSIS L.P NO 26/83

PLOTTED AREA	AC. 0.96	55.47%
PARK AREA	AC. 0.27	15.60%
ROADS AREA	AC. 0.40	23.13%
ASSIGNMENT LAND	AC. 0.10	5.78%
TOTAL EXTENT	1.73	100.00

SIZE OF PLOT	30x50 = 1500 SQYDS
TOTAL NO OF PLOTS	28
POPULATION	140
DENSITY	16.18 DU/AC

SCALE 1" = 66'



municipal engineer
sk
2/2/83

J.P.O

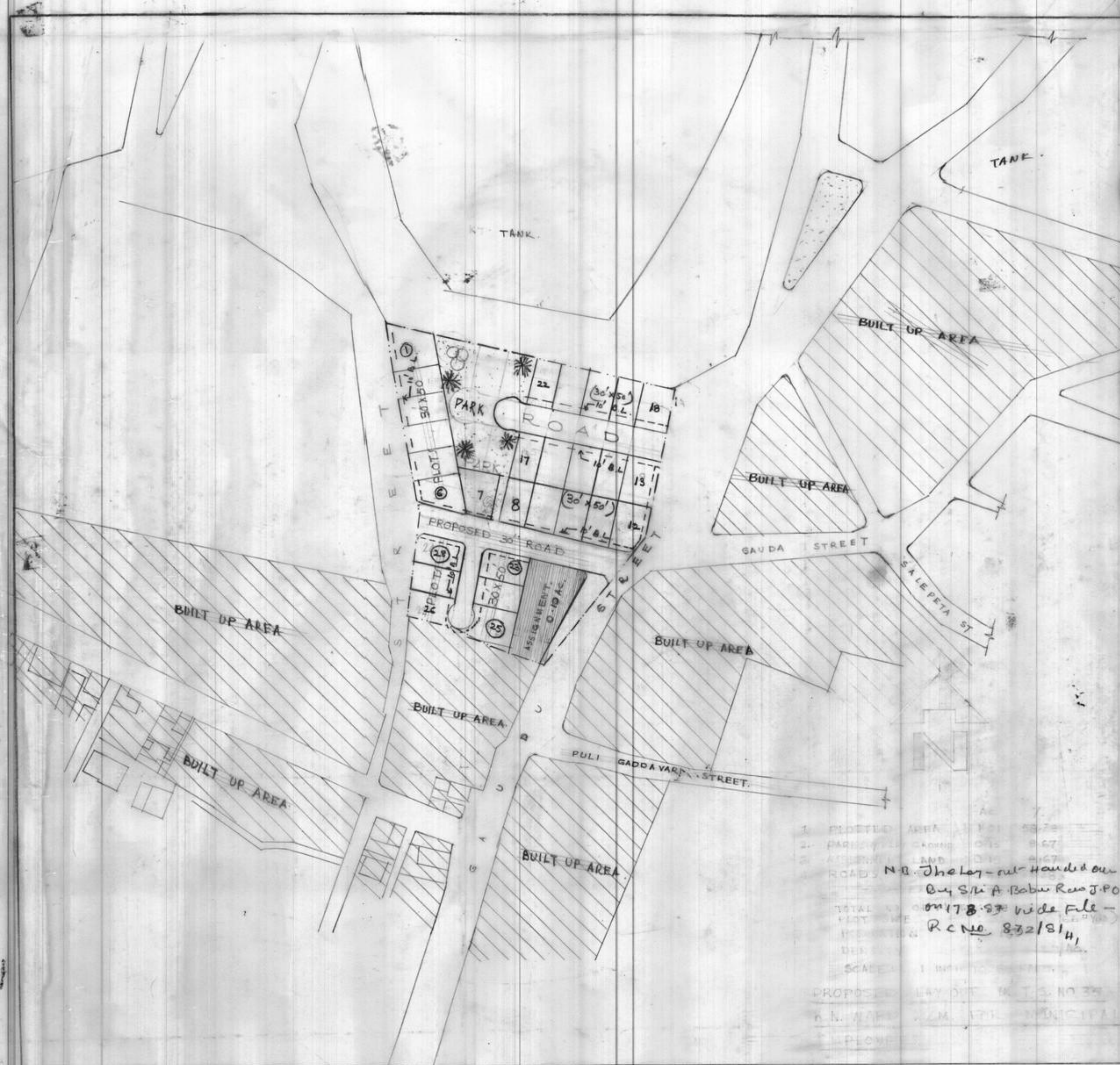
A.T.P

ASSOCIATE PLANNER

CHIEF TOWN PLANNER &
PROJECT DIRECTOR

VISAKHA PATNAM URBAN

DEVELOPMENT AUTHORITY



1. PLOTTED AREA 0.96 AC. 55.47%
2. PARK AREA 0.27 AC. 15.60%
3. ROADS AREA 0.40 AC. 23.13%
4. ASSIGNMENT LAND 0.10 AC. 5.78%
TOTAL EXTENT 1.73 AC. 100.00%

N.B. The layout handed over
by S.M.A. Babu Rao J.P.O
on 17.8.83 vide file -
R.C. No. 832/814,

SCALE 1" = 66'

PROPOSED LAYOUT NO. 35
K.N. WARD VIZIANAGARAM MUNICIPAL
EMPLOYEES