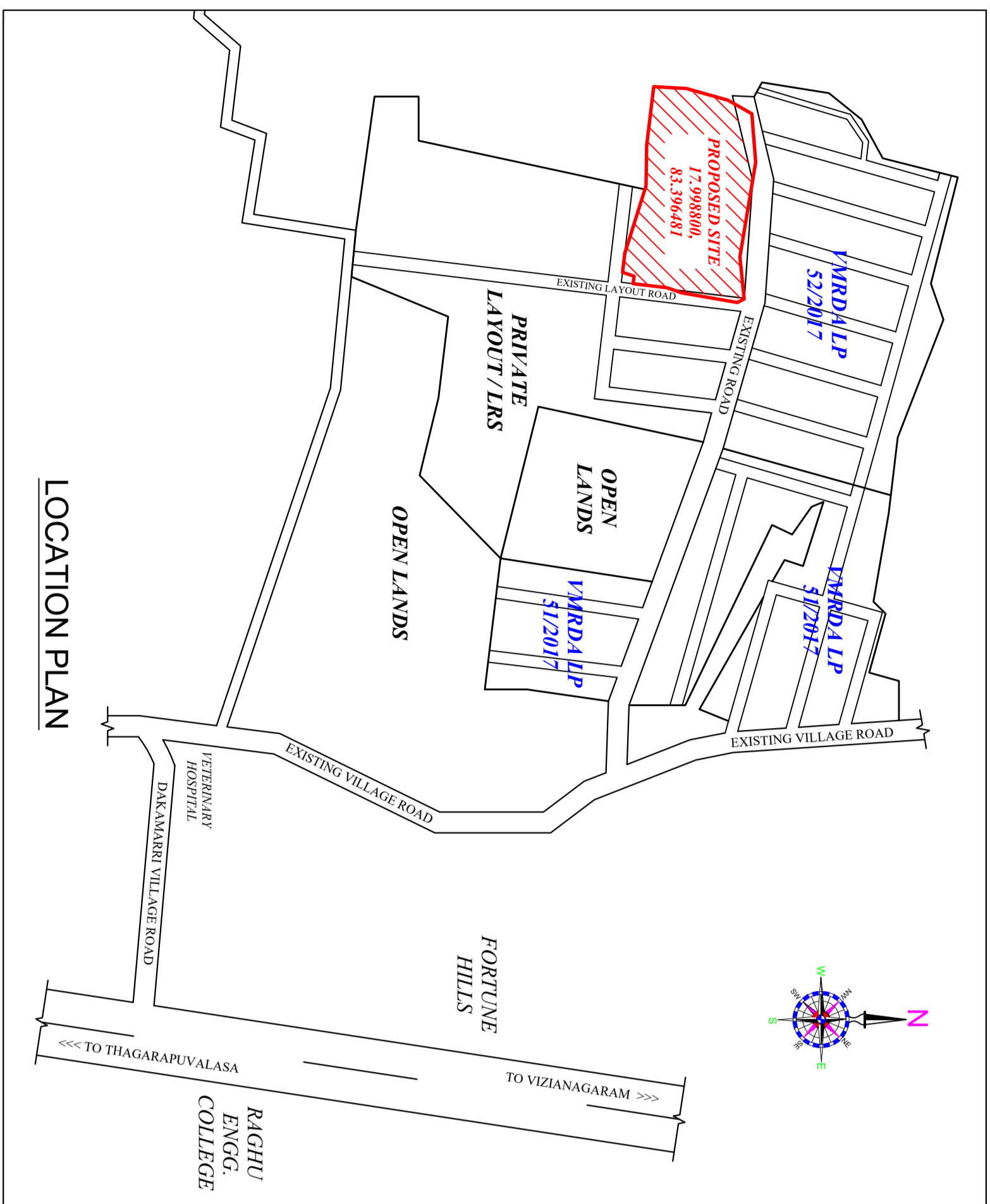
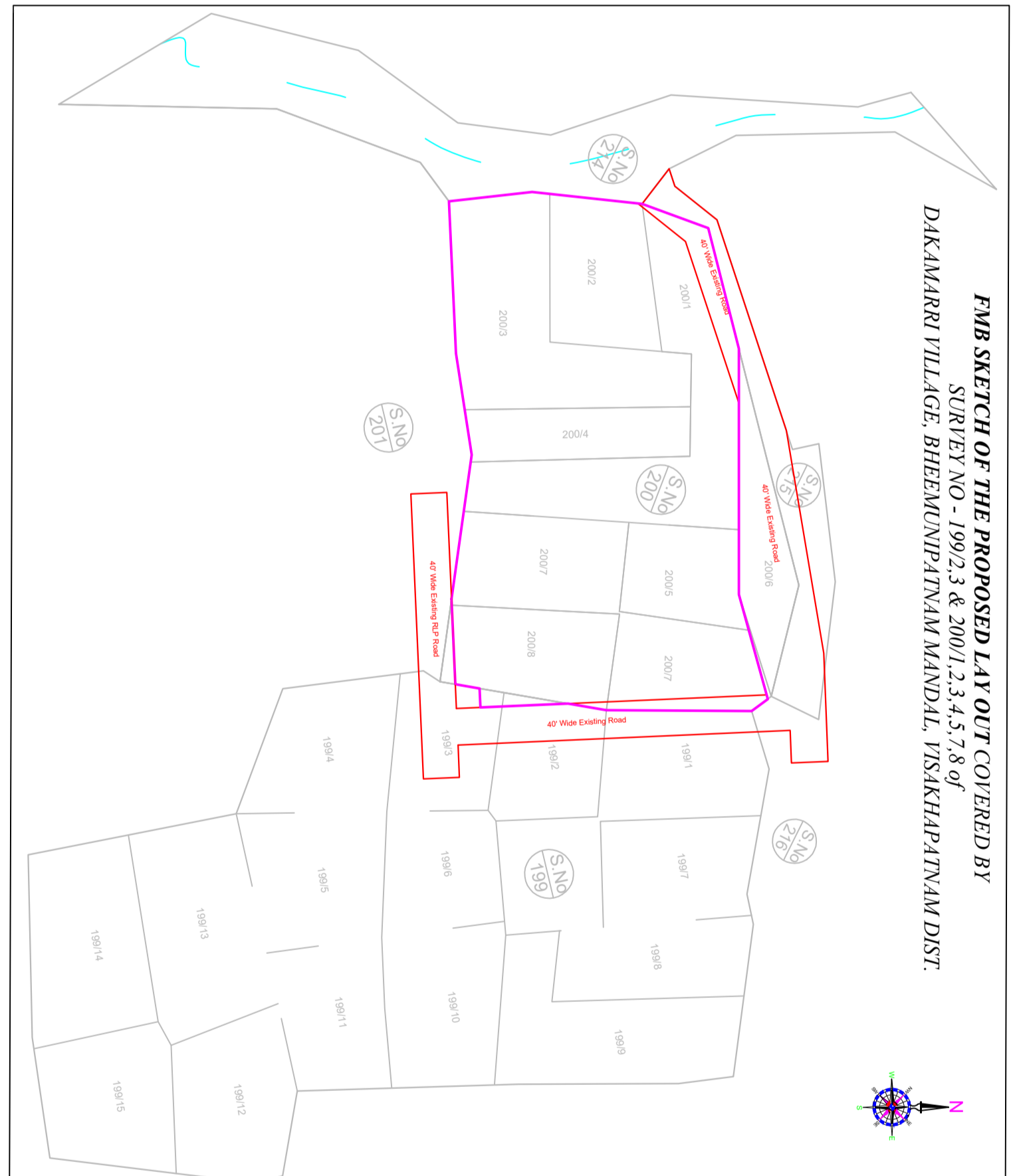




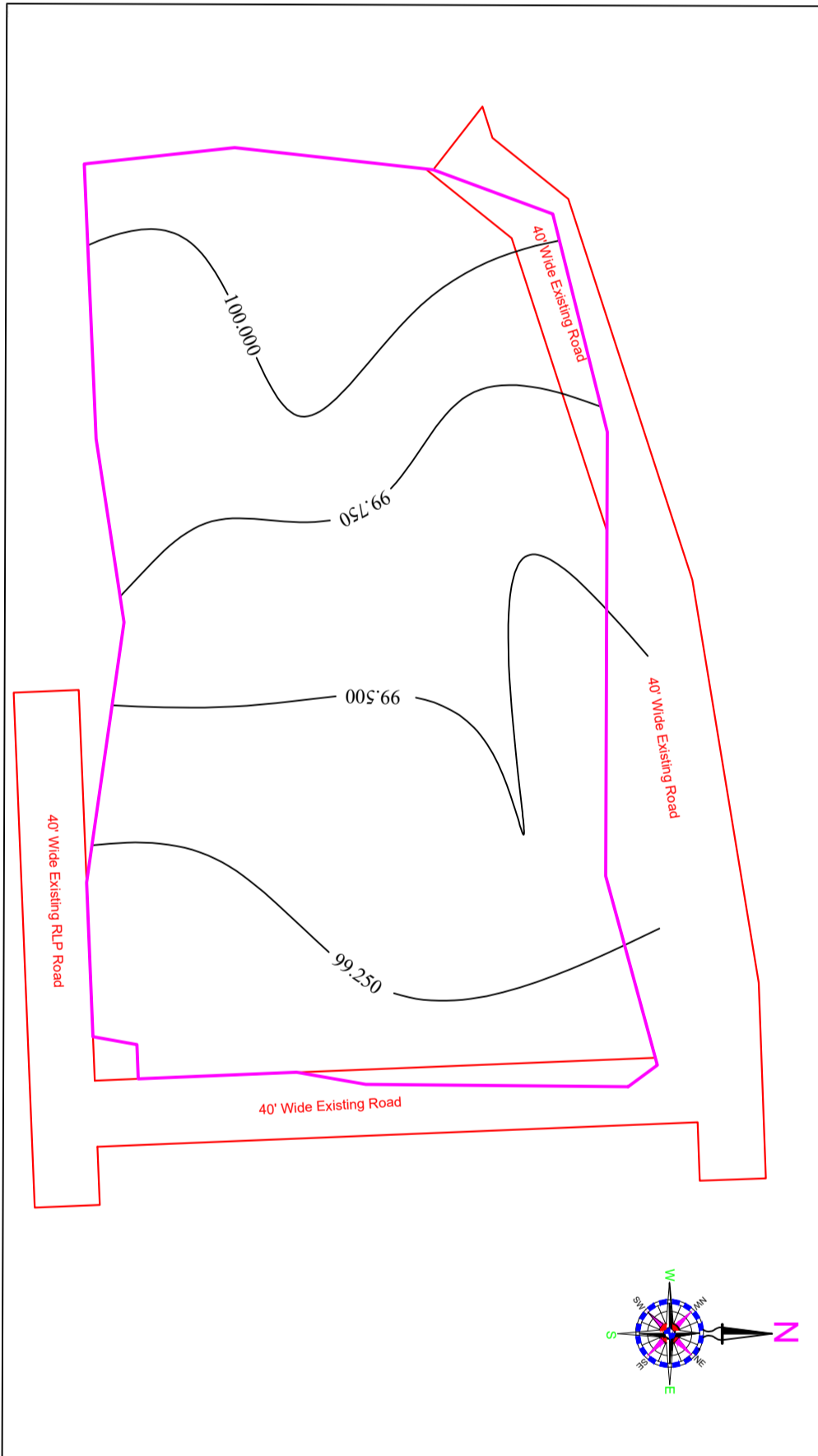
**LOCATION PLAN OF THE PROPOSED LAY OUT COVERED BY**  
SURVEY NO - 199/2,3 & 200/1,2,3,4,5,7,8 of  
DAKAMARRI VILLAGE, BHEEMUNIPATNAM MANDAL, VISAKHAPATNAM DIST.



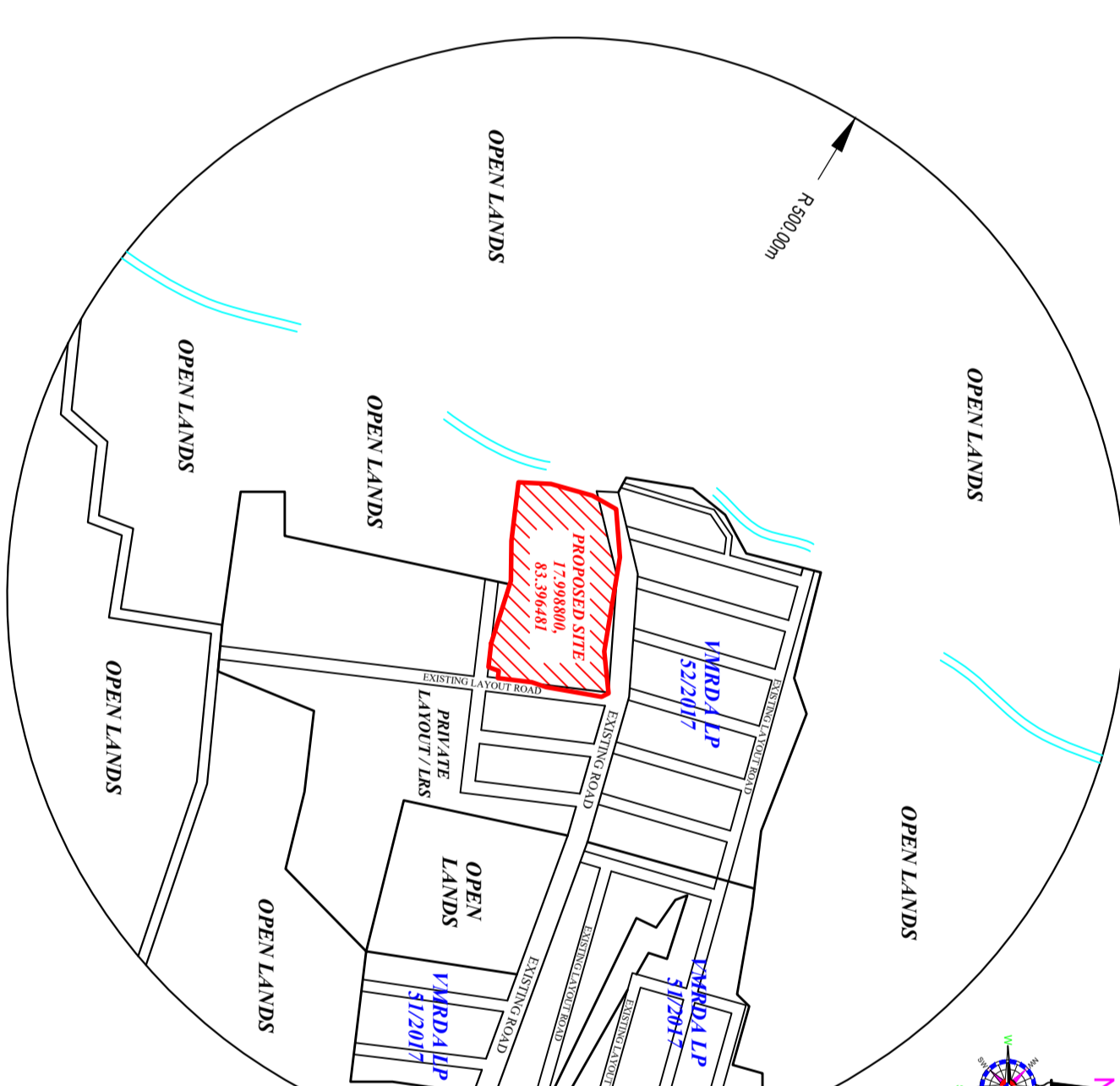
**LAYOUT PLAN**  
(Scale - 1:500)



**CONTOUR PLAN OF THE PROPOSED LAY OUT COVERED BY**  
SURVEY NO - 199/2,3 & 200/1,2,3,4,5,7,8 of  
DAKAMARRI VILLAGE, BHEEMUNIPATNAM MANDAL, VISAKHAPATNAM DIST.



**TOPO PLAN OF THE PROPOSED LAY OUT COVERED BY**  
SURVEY NO - 199/2,3 & 200/1,2,3,4,5,7,8 of  
DAKAMARRI VILLAGE, BHEEMUNIPATNAM MANDAL, VISAKHAPATNAM DIST.



S.No	Plot No	Plot Area	Plot Width	Plot Depth	Plot Length	Percentage	
						Plot Area	Plot Length
1	12300	100.0	80.0	120.0	-	14.29	-
2	12301	100.0	80.0	120.0	-	14.29	-
3	12302	100.0	80.0	120.0	-	14.29	-
4	12303	100.0	80.0	120.0	-	14.29	-
5	12304	100.0	80.0	120.0	-	14.29	-
6	12305	100.0	80.0	120.0	-	14.29	-
7	12306	100.0	80.0	120.0	-	14.29	-
8	12307	100.0	80.0	120.0	-	14.29	-
9	12308	100.0	80.0	120.0	-	14.29	-
10	12309	100.0	80.0	120.0	-	14.29	-
11	12310	100.0	80.0	120.0	-	14.29	-
12	12311	100.0	80.0	120.0	-	14.29	-
13	12312	100.0	80.0	120.0	-	14.29	-
14	12313	100.0	80.0	120.0	-	14.29	-
15	12314	100.0	80.0	120.0	-	14.29	-
16	12315	100.0	80.0	120.0	-	14.29	-
17	12316	100.0	80.0	120.0	-	14.29	-
18	12317	100.0	80.0	120.0	-	14.29	-
19	12318	100.0	80.0	120.0	-	14.29	-
20	12319	100.0	80.0	120.0	-	14.29	-
21	12320	100.0	80.0	120.0	-	14.29	-
22	12321	100.0	80.0	120.0	-	14.29	-
23	12322	100.0	80.0	120.0	-	14.29	-
24	12323	100.0	80.0	120.0	-	14.29	-
25	12324	100.0	80.0	120.0	-	14.29	-
26	12325	100.0	80.0	120.0	-	14.29	-
27	12326	100.0	80.0	120.0	-	14.29	-
28	12327	100.0	80.0	120.0	-	14.29	-
29	12328	100.0	80.0	120.0	-	14.29	-
30	12329	100.0	80.0	120.0	-	14.29	-
31	12330	100.0	80.0	120.0	-	14.29	-
32	12331	100.0	80.0	120.0	-	14.29	-
33	12332	100.0	80.0	120.0	-	14.29	-
34	12333	100.0	80.0	120.0	-	14.29	-
35	12334	100.0	80.0	120.0	-	14.29	-
36	12335	100.0	80.0	120.0	-	14.29	-
37	12336	100.0	80.0	120.0	-	14.29	-
38	12337	100.0	80.0	120.0	-	14.29	-
39	12338	100.0	80.0	120.0	-	14.29	-
40	12339	100.0	80.0	120.0	-	14.29	-
41	12340	100.0	80.0	120.0	-	14.29	-
42	12341	100.0	80.0	120.0	-	14.29	-
43	12342	100.0	80.0	120.0	-	14.29	-
44	12343	100.0	80.0	120.0	-	14.29	-
45	12344	100.0	80.0	120.0	-	14.29	-
46	12345	100.0	80.0	120.0	-	14.29	-
47	12346	100.0	80.0	120.0	-	14.29	-
48	12347	100.0	80.0	120.0	-	14.29	-
49	12348	100.0	80.0	120.0	-	14.29	-
50	12349	100.0	80.0	120.0	-	14.29	-
51	12350	100.0	80.0	120.0	-	14.29	-
52	12351	100.0	80.0	120.0	-	14.29	-
53	12352	100.0	80.0	120.0	-	14.29	-
54	12353	100.0	80.0	120.0	-	14.29	-
55	12354	100.0	80.0	120.0	-	14.29	-

PROJECT NO: 1167/0022/LP/MRDA/2024  
DATE: 14/02/2024  
PROJECT NAME: DAKAMARRI VILLAGE BHEEMUNIPATNAM MANDAL, VISAKHAPATNAM DIST. BRIDGE TO. SR. THALLURIPATNAM CHANDRA RAO, SR. THALLURIPATNAM RAO.  
PROJECT LOCATION: BHEEMUNIPATNAM MANDAL, VISAKHAPATNAM DIST. BRIDGE TO. SR. THALLURIPATNAM CHANDRA RAO, SR. THALLURIPATNAM RAO.  
PROJECT AREA: 1167/0022/LP/MRDA/2024  
PROJECT SCALE: 1:500  
PROJECT DRAWN BY: [Name]  
PROJECT CHECKED BY: [Name]  
PROJECT APPROVED BY: [Name]

**Land Use Analysis/Use distribution (Table 26)**  
Area covered under Proposed Use in %  
Total Area: 5511.14  
Proposed Area: 4311.14  
Percentage: 78.23  
Total Area: 5511.14  
Proposed Area: 4311.14  
Percentage: 78.23  
Total Area: 5511.14  
Proposed Area: 4311.14  
Percentage: 78.23  
Total Area: 5511.14  
Proposed Area: 4311.14  
Percentage: 78.23

**Land Area & Mortgage Details**

Sl. No	Plot No	Plot Area	Plot Width	Plot Depth	Plot Length
1	12300	100.0	80.0	120.0	-
2	12301	100.0	80.0	120.0	-
3	12302	100.0	80.0	120.0	-
4	12303	100.0	80.0	120.0	-
5	12304	100.0	80.0	120.0	-
6	12305	100.0	80.0	120.0	-
7	12306	100.0	80.0	120.0	-
8	12307	100.0	80.0	120.0	-
9	12308	100.0	80.0	120.0	-
10	12309	100.0	80.0	120.0	-
11	12310	100.0	80.0	120.0	-
12	12311	100.0	80.0	120.0	-
13	12312	100.0	80.0	120.0	-
14	12313	100.0	80.0	120.0	-
15	12314	100.0	80.0	120.0	-
16	12315	100.0	80.0	120.0	-
17	12316	100.0	80.0	120.0	-
18	12317	100.0	80.0	120.0	-
19	12318	100.0	80.0	120.0	-
20	12319	100.0	80.0	120.0	-
21	12320	100.0	80.0	120.0	-
22	12321	100.0	80.0	120.0	-
23	12322	100.0	80.0	120.0	-
24	12323	100.0	80.0	120.0	-
25	12324	100.0	80.0	120.0	-
26	12325	100.0	80.0	120.0	-
27	12326	100.0	80.0	120.0	-
28	12327	100.0	80.0	120.0	-
29	12328	100.0	80.0	120.0	-
30	12329	100.0	80.0	120.0	-
31	12330	100.0	80.0	120.0	-
32	12331	100.0	80.0	120.0	-
33	12332	100.0	80.0	120.0	-
34	12333	100.0	80.0	120.0	-
35	12334	100.0	80.0	120.0	-
36	12335	100.0	80.0	120.0	-
37	12336	100.0	80.0	120.0	-
38	12337	100.0	80.0	120.0	-
39	12338	100.0	80.0	120.0	-
40	12339	100.0	80.0	120.0	-
41	12340	100.0	80.0	120.0	-
42	12341	100.0	80.0	120.0	-
43	12342	100.0	80.0	120.0	-
44	12343	100.0	80.0	120.0	-
45	12344	100.0	80.0	120.0	-
46	12345	100.0	80.0	120.0	-
47	12346	100.0	80.0	120.0	-
48	12347	100.0	80.0	120.0	-
49	12348	100.0	80.0	120.0	-
50	12349	100.0	80.0	120.0	-
51	12350	100.0	80.0	120.0	-
52	12351	100.0	80.0	120.0	-
53	12352	100.0	80.0	120.0	-
54	12353	100.0	80.0	120.0	-
55	12354	100.0	80.0	120.0	-

**General Conditions**  
1. The area covered by this map is for the purpose of the proposed project.  
2. The area covered by this map is for the purpose of the proposed project.  
3. The area covered by this map is for the purpose of the proposed project.

**Color Index**  
Plot Area: Yellow  
Proposed Area: Green  
Existing Area: Red  
Water Body: Blue  
Road: Grey  
Open Space: Light Green  
Private Land: Pink  
Fortune Hills: Purple  
Rachu Enng. College: Orange  
Thagaravallasa: Light Blue  
Thalluripatnam Chandra Rao: Dark Blue  
Thalluripatnam Rao: Dark Green

